

誠樸雄偉

Sincerity with Aspiration

勵學敦行

Perseverance with Integrity



Editor-in-Chief: Dr. CHEN Xiaoping
Associate Editors : ZHAO Lei & HONG Yuxing

Images: AIC, BEN Peiqi, CHAN Meisa, CHEN Hua, Han Feng-tang, Hopkins
Nanjing Center, Medical School, NJU Graduate Student Union, PinTrip.CN,
SHE Zhijun, SIECA, WANG Jun, WANG Yaonan, ZHANG Chuan, ZHOU Yuan

Designed by Section of Student Exchange Programs,
Office of International Cooperation and Exchanges, Nanjing University
本手册由南京大学国际合作与交流处 学生交流科设计

Tel : 86-25-89683371
Website : <http://stuex.nju.edu.cn/en/>



南京大學
NANJING UNIVERSITY



Welcome Guide for International Exchange Students

A GUIDE TO THE DAILY LIFE IN NANJING UNIVERSITY

Designed by Section of Student Exchange Programs,
Office of International Cooperation and Exchanges, Nanjing University
本手册由南京大学国际合作与交流处 学生交流科设计

Table of Contents

Welcome to Nanjing University	04	About On-Campus Internet	36
About Nanjing City	06	<i>page 36</i> How to top up network fee?	
Pre-Arrival Information	08	<i>page 36</i> How to get access to the on-campus Internet?	
<i>page 08</i> Pamphlet of Nanjing University		Traffic in NJU	38
<i>page 09</i> Admission Letter		<i>page 38</i> On-Campus Shuttle Bus	
<i>page 09</i> Physical Examination Form		<i>page 39</i> Bicycles	
<i>page 10</i> Registration		Dining in NJU	42
<i>page 11</i> Insurance		<i>page 42</i> In Xianlin Campus	
<i>page 12</i> How to apply on-campus accommodation?		<i>page 45</i> In Gulou Campus	
<i>page 12</i> How to get to the different campuses?		<i>page 47</i> How to get restaurant card of Xiyuan hotel?	
<i>page 14</i> Nanjing Metro Map		Shopping in NJU	48
<i>page 15</i> How to get to Xianlin Campus from Gulou Campus after registration?		<i>page 48</i> Supermarkets in Xianlin Campus	
<i>page 15</i> Daily Expense		<i>page 49</i> Supermarkets in Gulou Campus	
<i>page 15</i> Weather and Clothing		<i>page 49</i> Gift Shop of NJU	
<i>page 15</i> Certificate of Attendance		Medical Service	50
<i>page 16</i> Orientation Meeting		About Express Delivery	51
<i>page 16</i> Contact Information of Our Office		Sports Facilities	52
<i>page 17</i> Contact Information of Institute for International Students		<i>page 52</i> In Xianlin Campus	
<i>page 17</i> Campus Map		<i>page 53</i> In Gulou Campus	
Visa and Residence Permit	18	About Courses	54
<i>page 20</i> Notices of Applying for Visa		<i>page 54</i> Courses for Exchange Students	
<i>page 21</i> Notices of Applying for Residence Permit		<i>page 55</i> How to select courses?	
Changing and Saving Money	23	<i>page 56</i> Where to have courses in Xianlin campus?	
Academic Calendar and Holidays	24	<i>page 56</i> Where to have courses in Gulou campus?	
<i>page 24</i> How semesters are arranged?		Grading System	57
<i>page 24</i> Holidays		<i>page 57</i> NJU Grading Scale	
Accommodation in NJU	25	<i>page 57</i> Credit and Transcript	
<i>page 25</i> Commonly used telephone numbers in Xianlin campus		About Library	58
<i>page 26</i> On-Campus Accommodation Information		<i>page 58</i> Library of Xianlin Campus	
<i>page 28</i> Dorm No. 21 in Xianlin Campus		<i>page 59</i> Library of Gulou Campus	
<i>page 30</i> Xiyuan Dorms in Gulou Campus		International Student Support	60
<i>page 30</i> How to top up electricity fee in Xianlin campus?		Cultural Life in NJU	62
<i>page 32</i> Notices for on-campus accommodation		<i>page 62</i> Cultural Center and Heritage	
<i>page 33</i> Notices for off-campus accommodation		<i>page 62</i> Cultural Activities	
About Campus Card	34	<i>page 63</i> Excursions	
<i>page 34</i> How to get campus card?		About Extending Study	63
<i>page 35</i> How to top up campus card?		Before Leaving NJU	64
		F.A.Q.s	66
		Voice of Exchange Students	67

04 Welcome to Nanjing University



Xianlin Campus



Gulou Campus

Founded in 1902, Nanjing University (NJU) is a century-old university and enjoys a high reputation both at home and abroad. The historical development of the university has been closely connected with the mission of the nation and the needs of society. The vision of NJU is to build itself into a world-class comprehensive, research-intensive and internationalized higher learning institution oriented towards “high-caliber faculty, top-notch students and cutting-edge research”. NJU consists of two beautiful campuses, Gulou and Xianlin.



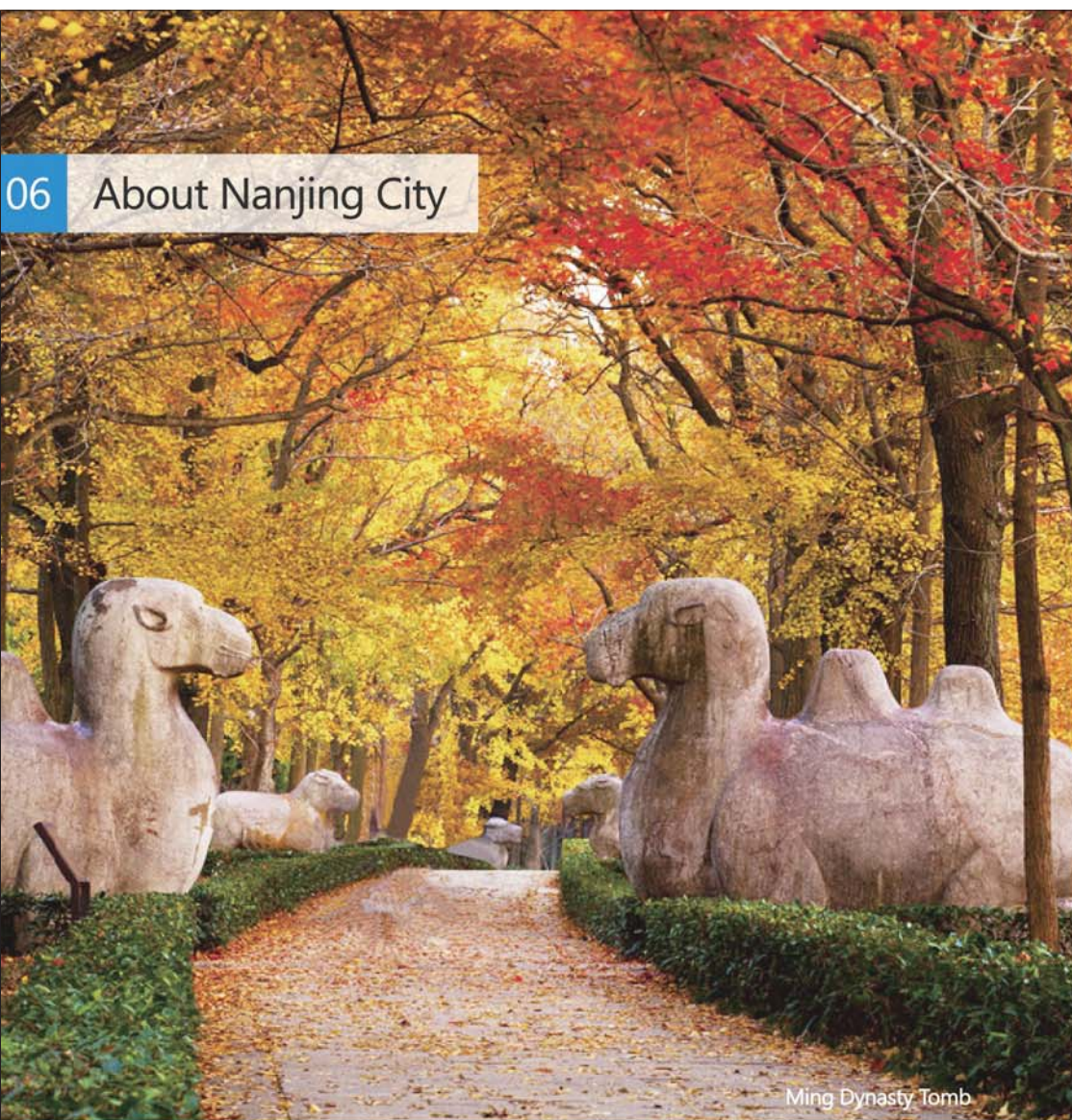
Presently, NJU has over 33,205 full-time students, among whom about 14,188 are undergraduate students, 15,667 master and doctoral students, and 3,350 international students. NJU has 28 schools containing 73 departments and runs 8 national key disciplines in the primary disciplinary categories, 13 national key disciplines in secondary categories, and 6 national key disciplines on the fostering list. NJU is listed as one of the first group of high-level universities in the national “211 Project” and “985 Project”, which provide heavy funding from the central government. As a member of the China 9 League (C9), NJU boasts a strong team of faculty with humanities, social sciences, natural sciences, medicine and engineering.

NJU is one of the leading comprehensive universities in China. According to the Essential Science Indicators, 16 academic disciplines at NJU are ranked in the top 1% worldwide, ranking top among Chinese universities. In the world ranking of university discipline published by QS 2014 ranking, NJU has 20 disciplines listed in the global top 200. In 2016, NJU was ranked 20th in the Global Nature Index among global universities, 4th in the Asia-Pacific Nature Index, and 2nd among Chinese Universities.

NJU is very active in international cooperation and academic exchanges. So far, it has established partnership with over 280 institutions of higher learning and research institutes from more than 30 different countries. NJU has never ceased its efforts to explore international cooperation. Such efforts resulted in the establishment of the Johns Hopkins University-Nanjing University Center for Chinese and American Studies, the Sino-German Institute for Law Studies with Gottingen University, and the Center for Chinese and Japanese Studies with Tokyo University, etc. Many world-famous scholars, including some Nobel Prize laureates, are honorary or visiting professors of NJU.



06 About Nanjing City



Ming Dynasty Tomb

Nanjing is one of China's great ancient capitals and historically and culturally famous cities. It has so many scenic spots deserving visits: Dr. Sun Yat-sen's Mausoleum, Ming Dynasty Tomb, Zhonghua Gate, Zhanyuan Garden (Taiping Heavenly Kingdom Museum), Ganjia Residence (Nanjing Folklore Museum), Presidential Residence, Confucius Temple, Nanjing Museum, etc. Students can, outside of class time, visit Nanjing and other places in China.





When traveling, you must bring your passport and residence permit, and must protect your identification and valuables.

Nanjing's climate is subtropical and humid, its average annual temperature is 15.3°C, and its annual precipitation is 1106.5mm, with the rainy season being mid-June to early July. "Summer heat, Winter cold" are words that differentiate Nanjing from other cities south of the Yangzi River in how aptly they describe the city's climate. Chances of snow are usually greatest in December.




Qin-Huai River

 **Spring:** Nanjing's spring begins roughly in late March or early April, and lasts until late May or early June; its average length is 60-70 days.

 **Summer:** Nanjing's summer runs from early or mid-June to mid-September, lasting roughly 100 days, and can be divided into distinct rainy and mid-summer drought weather.

 **Fall:** Fall runs from mid-September to mid-November, lasting roughly 60 days.

 **Winter:** Nanjing's winter lasts from mid-November to late March or early April of the next year. Winter weather is characteristically cold and dry. Falling temperatures and strong winds are this season's main weather phenomena.



08 Pre-Arrival Information



Pamphlet of Nanjing University

Please download the pamphlet of "Introduction of International Exchange Programs of Nanjing University" from the following website to have a detailed understanding of Nanjing University (NJU).



Website of Pamphlet of NJU:

http://stuex.nju.edu.cn/en/a/Introduction_to_NJU/2016/0617/796.html

You could find information and instructions concerning application, visa issues, accommodation, academic affairs, services for everyday life, etc. on this website.

<http://stuex.nju.edu.cn/en/>



Admission Letter

Generally, Nanjing University will send admission letters by mail in late June (for Fall Semester) and late December (for Spring Semester). Admission letters will only be sent to home universities' international offices. We won't send them to students directly or to addresses other than international offices.

Physical Examination Form

Physical Examination is only required for **one-year** students.

The result of Physical Examination will be necessary in the applications for both Visa and Residence Permit in China.

Before registration, you should bring your passport, several 2-inch passport photos with a light background, the original copies of the "Physical Examination Record for Foreigner", and the "HIV, Syphilis, and Hepatitis Examination Report" to Jiangsu International Travel Health Care Center (No. 39 Chuang-Zhi Road, Tel: 86-25-52345700/52345711/52345707) to have them verified.

Notice:

1. Physical examination and verification procedures at the Jiangsu International Travel Health Care Center will require the payment of examination and verification fees. If you have already had a physical examination outside China, you must bring the original copies of all documentation from your exam to the health center, and pay a 60 Yuan RMB verification fee. If you need to do a physical examination at the health center, the fees will be 450 Yuan RMB.

Physical examination time: 8:00---11:00, from Monday to Friday;

Verification time: 8:00---11:30, 13:30---17:00, from Monday to Friday.

2. You may be required to do the examination of "HIV, Syphilis, and Hepatitis Examination Report" at Jiangsu International Travel Health Care Center.

3. The examination of "Physical Examination Record for Foreigner" could be done in your home country in advance. **Exchange students must take the original copy of "Physical Examination Record for Foreigner" by themselves to Nanjing University. Please do not send it to our office.**

4. Please download Form of "Physical Examination Record for Foreigner" from the following website:

http://stuex.nju.edu.cn/en/a/Download_Center/20150805/64.html

It is highly recommended that students do the physical examination after they come to China. If students do the physical examination in their country, they still need to get the report verified and it seems many reports are deemed unqualified by the Health Center.



Registration

10

Students must register within the time period stipulated in the notice of admission. Please bring the following documents to Nanjing University to do registration:

- Admission letter
- Form of JW202
- Several 2-inch passport photographs
- Your passport
- Original copy of Physical Examination Record (if required)



Be sure to take several passport-sized photos with a light background with you when you do registration at NJU.

You would pay some money by RMB cash on registration spot. Be sure to take enough amount of RMB in cash with you. In NJU campuses, your shopping in supermarkets, food and drink in canteens, and so on could only be done by cash. Credit card can not be used in Campuses.

Registration Dates: End of August (for fall semester); End of February (for spring semester)

Registration Time: 8:30 am---11:50 am; 13:30 pm---16:00 pm

Registration Address (in English): Lobby on the ground floor of Zeng Xianzi Building, Institute for International Students, Nanjing University, 18 Jinyin Street, Gulou District, Nanjing.

Registration Address (in Chinese): 金银街18号 (近上海路), 南京大学鼓楼校区海外教育学院 (曾宪梓楼)

Notice: After registration, please come to the dorms in Xianlin campus or Xiyuan dorms in Gulou campus to check-in.

When you are doing registration after your arrival, there are several important things you need to do. Please refer to the checklist as following to ensure that you can start and pursue your study in NJU successfully.

For new students:

- Obtain your student number
- Fill in the registration procedure form for new students
- Fill in the form of admission
- Obtain your campus card
- Get the maps of Xianlin and Gulou campus
- Get the brochure of "Welcome Guide for International Exchange Students"
- Purchase a student health insurance
- Register for your student status in NJU and apply for your student card
- Fill in the residence application form & residence report form and apply for a residence permit
- Return the filled procedure form to staffs and leave your contact information
- Go to the dorms in Xianlin campus or Xiyuan dorms in Gulou campus for check-in & registration, and the pay for room fee
- Take Chinese ability test for purpose of class assignment (Freshmen who don't have any Chinese learning experience are not required to take the exam)
- Get class assignment card & class schedule and purchase of textbooks for Chinese language learning
- Go to the International Students Services Office of the Institute for International Students to pick up your student card one week later. (Office address: Room 503, ZENG Xianzi Building, Gulou campus)
- Keep calm: the first steps are always the hardest 😊

For students enrolled:

- Register for your student status in NJU
- Fill in the residence application form and update a residence permit (if required)
- Leave new contact information if changed
- Go to the dorms in Xianlin campus or Xiyuan dorms in Gulou campus for check-in & registration

Insurance

Exchange students must have comprehensive health insurance valid in China for enrollment as a full-time student at NJU. Since many insurance policies purchased outside China require substantial co-payments, have caps or exclude many illnesses, it is therefore urged that all incoming students should purchase a student health insurance when they do registration at NJU.

Price: 400 Yuan RMB/one semester & 800 Yuan RMB/one academic year.

How to apply on-campus accommodation?

You have to apply on-campus accommodation due to the limited spots of student dormitories. Please download the Accommodation Application Form from the following website:

http://stuex.nju.edu.cn/en/a/Download_Center/20160918/807.html



Please be well noted that:

- Please email the filled Accommodation Application Form before October 30th (Exchange for spring semester) or April 30th (Exchange for fall Semester) to your coordinator with the other application materials.
- Reservation cannot be cancelled once you submit the application form.
- Applications overdue won't be considered.
- NJU will assign students' accommodation according to applications, students are not permitted to change rooms on their wills.
- If you arrive in Nanjing before the official registration date stated in our pre-arrival email and admission letter, please arrange accommodation in a hotel or youth hostel. Rooms are not available before the official arrival date.

How to get to the different campuses?



Notice:
We do not provide
pick-up service.

From Shanghai Pudong Airport to Nanjing

Take a train to Nanjing from either Shanghai Railway Station or Shanghai Hongqiao Railway Station. The train leaves for Nanjing every half an hour.

From Nanjing Railway Station to Gulou campus (about 6 km)

By Taxi: It will cost you about 25 Yuan RMB.

By Metro: Take metro line 1 (toward China Pharmaceutical University) to Gulou Station and then take the second exit. You may call a taxi (for about 11 Yuan RMB) or take a 15-minute walk to the campus

From Nanjing South Railway Station to Gulou campus (about 15 km)

By Taxi: It will cost you about 40 Yuan RMB.

By Metro: Take metro line 1 (toward Maigao Qiao) to the Gulou station and then take the second exit. You may call a taxi (for about 11 Yuan RMB) or take a 15-minute walk to the campus.



From Nanjing Lukou International Airport to Gulou campus (about 45 km)

By Airport shuttle bus: Take bus line 1 to Nanjing Railway Station or take bus line 2 to Zhonghua Gate. It will cost you 25 Yuan RMB. Then take a taxi to the dormitory (for about 22 Yuan RMB).

By Taxi: It will cost you around 150~200 Yuan RMB.

By Metro: Take metro Airport Line (toward Nanjing South Railway Station) at Lukou Airport to Nanjing South Railway Station (7 stops). And then transfer Line 1 inside the station. Take metro line 1 (toward Maigao Qiao) to the Gulou station and then take the second exit. You may call a taxi (for about 11 Yuan RMB) or take a 15-minute walk to the campus.

From Nanjing Railway Station to Xianlin campus (about 18 km)

By Taxi: It will cost you about 50 Yuan RMB.

By Metro: Take metro line 1 (toward China Pharmaceutical University) to Xin Jiekou Station and then take metro line 2 (toward Jingtian Street) inside the station. Take exit 1 at Nanjing University Xianlin Campus Station. You may take a 20-minute walk to the campus.

From Nanjing South Railway Station to Xianlin campus (about 30 km)

By Taxi: It will cost you about 90 Yuan RMB.

By Metro: Take metro line 1 (toward Maigao Qiao) to Xin Jiekou Station and then take metro line 2 (toward Jingtian Street) inside the station. Take exit 1 at Nanjing University Xianlin Campus Station. You may take a 20-minute walk to the campus.

From Nanjing Lukou International Airport to Xianlin campus (about 60 km)

By Airport shuttle bus: Take bus line 1 to Nanjing Railway Station or take bus line 2 to Zhonghua Gate. It will cost you 25 Yuan RMB. Then take a taxi to the campus (for about 50 Yuan RMB).

By Taxi: It will cost you around 150~200 Yuan RMB.

By Metro: Take metro Airport Line (toward Nanjing South Railway Station) at Lukou Airport to Nanjing South Railway Station (7 stops). And then transfer Line 1 inside the station. Take metro line 1 (toward Maigao Qiao) to the Xin Jiekou Station and then take metro line 2 (toward Jingtian Street) inside the station. Take exit 1 at Nanjing University Xianlin Campus Station. You may take a 20-minute walk to the campus.

For the details, please refer to the following website:

http://stuex.nju.edu.cn/en/a/Getting_to_Campus/



Nanjing Metro Map

14



南京地铁线路图 Nanjing Metro Map

已开通线路 Available Lines:

- 1 迈皋桥 - 中国药科大学
Mai Gao Qiao - China Pharmaceutical University (CPU)
- 2 油坊桥 - 经天路
You Fang Qiao - Jing Tian Lu
- 3 秣周东路 - 林场
Mo Zhou East Road - Lin Chang
- 10 安德门 - 雨山路
An De Men - Yu Shan Lu
- S1 南京南站 - 禄口机场
Nanjing South Railway Station - Lukou International Airport
- S8 泰山新村 - 金牛湖
Tai Shan Xin Cun - Jin Niu Hu
- 4 龙江 - 仙林湖
Long Jiang - Xian Lin Hu



You could also buy Metro card as the above picture shown in the station, which is much convenient for getting on the metro.



How to get to Xianlin Campus from Gulou Campus after registration?

NJU incorporates both Gulou and Xianlin campuses. Gulou campus is located in downtown Nanjing. Xianlin campus is about 20 kilometers away from Gulou campus.

1. By Taxi--It takes about 40 minutes and costs you about 60-70 Yuan RMB.
2. By Metro--Take Metro line 1 at Zhu-Jiang-Lu Station to Xin-Jie-Kou Station (1 stop) and then transfer to Metro line 2 (towards Direction of Jing-Tian-Lu) to NJU Xianlin Campus Station (14 stops). Take Metro line 4 at Gulou Station to Jin-Ma-Lu Station (8 stops) and then transfer to Metro line 2 (towards Jin-Tian-Lu) to NJU Xianlin Campus Station (5 stops).

Metro



Taxi



Daily Expense

Be sure to take enough amount of RMB cash with you. In NJU campuses, the shopping in supermarkets, food and drink in canteens, and so on could only be done by cash or campus card. Recharge campus card also requires RMB cash. Credit card could not be used in Campuses.

Weather and Clothing

Nanjing has a moderate climate. However, the weather has become more changeable during the past few years. Depending on the year, summers can be very hot and sunny. In the summer the average temperature is about 30°C, although sometimes it reaches as high as 35°C. Winters can be snowy and cold. The average temperature in Nanjing in February is between 4-5°C, but it is possible that the temperature could drop to below zero. Bringing a warm coat and boots is imperative in order to feel comfortable during the winter season. It may be wise to bring along a wind-and water-proof jacket, in case there may be rainy days.

Certificate of Attendance

If you are required by your home university to sign the Certificate of Attendance or Learning Agreement, please bring the form to our office and we will sign and stamp on it.

Orientation Meeting

16

At the beginning of semester, our office will organize an orientation meeting for exchange students for the introduction of study and life in NJU. We will email to inform you the time, date and venue. Please remember to read all the emails from our International Office carefully!



Orientation meeting for fall 2016

Contact Information of Our Office

- Office Name: Section of Student Exchanges, Office of International Cooperation and Exchanges
- Office Address: Room 803 (For European/Oceanian Affairs) & Room 805 (For Asian/North American/South American Affairs), North Administration Building in Xianlin Campus. You could check the map of Xianlin campus to find out the position of our office.
- Website: <http://stuex.nju.edu.cn/en>
- Email: stuex@nju.edu.cn
- Tel: 86-25-89683371 (Room 803) & 86-25-89683504 (Room 805)



Contact Information of Institute for International Students

Institute for International Students (IIS) is on the 5th floor of Zeng Xianzi Building in Gulou Campus. You could check the map of Gulou campus to find out the building of the Institute.

- The Enrollment Service Office (Admission/Registration/Arrival Certificate)
Room 514, ZENG Xianzi Building, Tel: 86-25-83594535
- The Study Abroad Student Affairs Office (Visa Affairs)
Room 518, ZENG Xianzi Building, Tel: 86-25-83592473
- The International Students Services Office (Daily Affairs)
Room 503, ZENG Xianzi Building, Tel: 86-25-83593597
- The Scholarship Affairs Office (Chinese Government Scholarship/Confucius Institute Scholarship/Other scholarships)
Room 514, ZENG Xianzi Building, Tel: 86-25-83593586
- The Academic Affairs Office (Affairs of Chinese Language & Culture Courses and Transcripts)
Room 520, ZENG Xianzi Building, Tel: 86-25-83594613
- The Teaching Material Office (Textbook Purchase)
Library on the 4th floor, ZENG Xianzi Building, Tel: 86-25-83593757

You could get a set of Hand-Drawn Maps of NJU (including both of Gulou and Xianlin campuses) on registration spot.



Campus Map

Nanjing University has two campuses: Gulou Campus and Xianlin Campus. Please check the maps of these two campuses as following:

Map of Gulou Campus:
http://stuex.nju.edu.cn/en/a/Introduction_to_NJU/2015/0816/674.html



Map of Xianlin Campus:
http://stuex.nju.edu.cn/en/a/Introduction_to_NJU/2015/0816/673.html



18 Visa and Residence Permit



Visas and residence permits are important documents for the legal residence of international students in China. They determine whether a student can study at ease during their time at the school, as well as easily finish their studies. Visas and residence permits are, however, relatively complex matters, and different situations require different complicated procedures to handle them. Students should therefore read and understand the following material in detail, and may consult the Study Abroad Student Affairs Office of Institute for International Students on any aspect which remains unclear. This ensures that for the time of your study, your visa and residence permit will not become a problem.

Students who are under an X1 visa and will stay at Nanjing for more than half a year need to apply for a residence permit which allows you to have the multiple entry. These students must go to Nanjing Public Security Bureau to apply for a residence permit within 30 days, after entering China.

These students should bring the following materials to the Entrance and Exit Affairs office of the Nanjing Public Security Bureau to handle the residence permit application procedures:

- "Certificate of Health" issued by the Nanjing Public Health and Quarantine Bureau
- "Application for Visa and Residence Permit" issued by the school
- "Application Form for International Students Entrance Visa" (JW201 or JW202)
- A valid passport with an X type visa and its copy
- Two passport-sized photos
- Applying for residence permit normally costs 600-800 Yuan RMB.

Students who live on-campus do not need to report your address in the police station as the administrator of your dorm will do it for you.

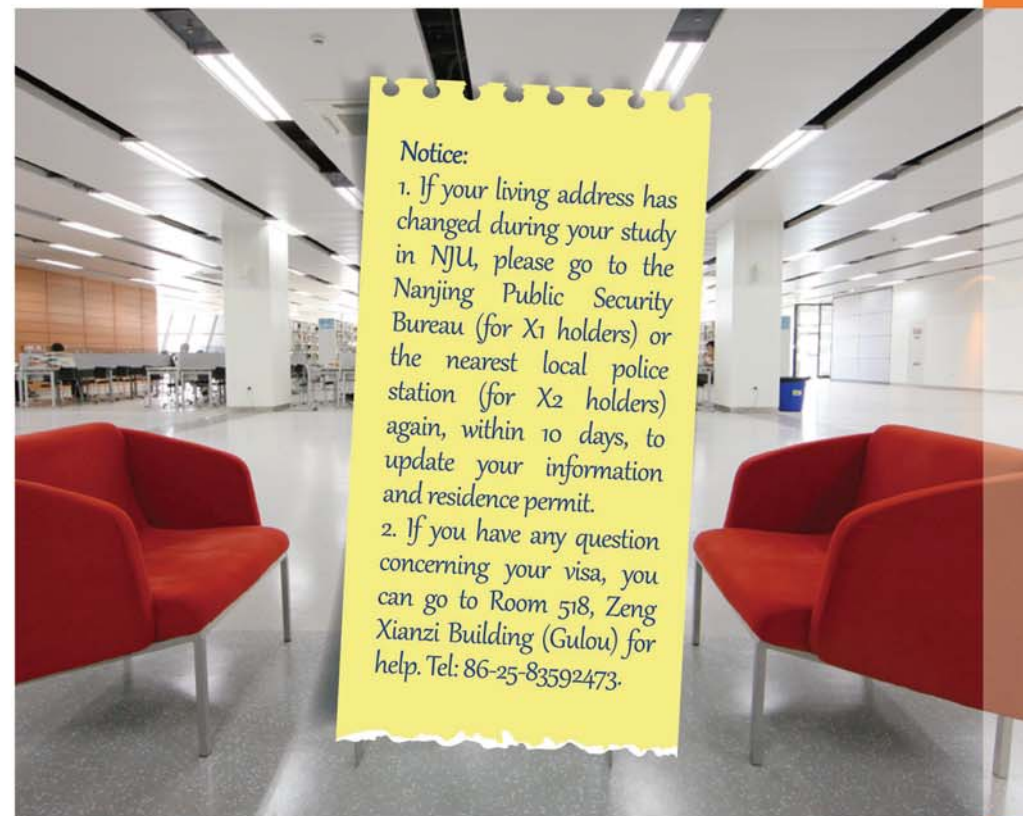
Students who live off-campus should go to the nearest local police station to report your address with your passport within 24 hours after moving in your room.



The address of Entrance and Exit Affairs office of Nanjing Public Security Bureau: No. 173, Bai-Xia Road

Consultation Number: 86-25-84420005

Visa Information Number: 86-25-84420014/84420024



Notices of Applying for Visa

20

1. Entry Visas

When coming to China, students must hold a passport, as well as a study (X) visa in order to enter the country. If entering on any type of visa other than X, students must have it updated to a study visa as soon as possible.

Holders of X1 visas must go to the Exit Affairs Office of Nanjing Public Security Bureau and apply for a residence permit within 30 days of entering the country. Before going to the Bureau, it is necessary to first go to the Visa Affairs Office of Institute for International Students to get the necessary documents.

2. Updating Visas

A. Who needs to do it?

Students who enter the country holding any visa other than a study (X) visa, or who enter the country with X1 visa and need to apply the residence permit.

B. When should I do it?

Applications should be made within 30 days of entering the country.

C. How do I do it?

Students should bring their student card, a valid passport, and one passport photo to the Visa Affairs Office and fill out an "Application for Visa and Residence Permit".

Bring a valid passport and "Application for Visa and Residence Permit," with an official stamp from the Institute for International Students and an attached personal photo, to the Exit Affairs Office of Nanjing Public Security Bureau to complete procedures necessary for updating your visa.

D. What if I don't do it?

If you do not update your visa, so that it no longer reflects your identity, then you may face consequences as stipulated in relevant provisions of the "Law of the People's Republic of China on Control of the Entry and Exit of Aliens".



Notices of Applying for Residence Permit

1. Proof and Record of Physical Examination

● New students coming from abroad need to go to Jiangsu International Travel Health Care Center to hand in proof of a physical examination for verification. A "Health Certificate" will be issued to those who pass the verification.

● If a student's documents do not meet requirements, they must undergo another health inspection, and will receive their "Health Certificate" after passing the examination.

● Residence permits for a stay shorter than 12 months do not require a health inspection, while residence permits for 12 months or longer do; however, physical examinations are always necessary for processing a second residence permit.

2. Residence Permit Validity

The duration of a residence permit's validity is usually the same length as the period for which students are allowed to study in NJU, and cannot exceed the duration of one's passport's validity.

3. Updating Residence Permits

A. Who needs to do it?

Students who change their place of residence, passport number (by receiving a new passport), or their work unit (i.e., the university they attend), etc.

B. When should I do it?

Within 10 days of any change to your place of residence, passport number (by receiving a new passport), or their work unit (i.e., the university they attend), etc.

C. How do I do it?

Students should bring their student card, a valid passport and one passport photo to the Visa Affairs Office and fill out an "Application for Visa and Residence Permit".

Bring a valid passport and "Application for Visa and Residence Permit," with an official stamp from the Institute for International Students and an attached personal photo, to the Exit Affairs Office of Nanjing Public Security Bureau to conduct procedures necessary for updating your residence permit.

D. What if I don't do it?

If you change programs and haven't already taken care of updating the program listed on your residence permit, you will be punished in accordance with relevant provisions of the "Law of the People's Republic of China on Control of the Entry and Exit of Aliens".

4. Extending Residence Permits

A. Who needs to do it?

Those who will continue to study in China beyond their residence permit's expiration date will need to apply for an extension.

B. When should I do it?

Applications for residence permit extensions should be made at least one month before the permit's expiration.

C. How do I do it?

Students should bring their student card, a valid passport and one passport photo to the Visa Affairs Office and fill out an "Application for Visa and Residence Permit".

Bring a valid passport and "Application for Visa and Residence Permit," with an official stamp from the Institute for International Students and an attached personal photo, to the Exit Affairs Office of Nanjing Public Security Bureau to conduct procedures necessary for updating your residence permit.

If you didn't turn in your "Health Certificate" the first time you applied for a residence permit, then you are required to turn it in when you apply for an extension.

D. What if I don't do it?

If your residence permit expires and you haven't already taken care of applying for an extension, but continue to remain in China, then you become an illegal resident and will be subject to fines, as stipulated in relevant provisions of the "Law of the People's Republic of China on Control of the Entry and Exit of Aliens", and, in the most serious circumstances, be detained or deported.



Changing and Saving Money

In Nanjing, Bank of China (中国银行), Industrial and Commercial Bank of China (中国工商银行), China Construction Bank (中国建设银行), Agricultural Bank of China (中国农业银行), China Merchants Bank (中国招商银行), Chinese Bank of Communications (中国交通银行), China Cathay Bank (中国华夏银行) and other banking institutions all have branches that will change foreign cash, currency and traveler's checks for RMB. Some of the larger hotels in the area will also change foreign currency for RMB. For example, in the neighborhood of Gulou campus there is Jingling Hotel, Gu Nan Du Hotel, etc.

International students can use their own passport to open RMB or foreign currency accounts at any bank in Nanjing.

● Exchange students must complete payment of relevant fees as agreed to by both universities.

1. If the agreement stipulates free tuition, then there is no need to pay tuition; however, you will need to pay other fees while in Nanjing, including housing fees, living expenses, the cost of textbooks, etc.
2. If the agreement stipulates free tuition and housing, you may apply to the International Student Apartments for a standard room, with no need to pay room fees during your studies as an exchange student.



24 Academic Calendar and Holidays

How semesters are arranged?

The academic year at NJU is divided into two semesters: a spring semester and a fall one. A semester usually lasts 17 weeks, of which the last 2 weeks are set aside for exam review. The school year starts in September, which is also the start of the fall semester; the spring semester usually starts in February.

The summer vacation begins in July, and lasts for about 8 weeks. Winter vacation is determined by the date of the Chinese Spring Festival, also known as Chinese New Year, and because the date of this festival differs from year to year, the length of the winter break is not fixed. It usually begins 12 days before the start of the festival, and lasts about 5 weeks in all.

Holidays

International exchange students enjoy the same holidays as Chinese students.

Apart from winter and summer vacations, important holidays include:

January 1 st	New Year Day	1 day vacation
April 5 th	Qing Ming Festival	1 day vacation
May 1 st	Labor Day	1 day vacation
June	Dragon Boat Festival	1 day vacation
September	Mid-Autumn Festival	1 day vacation
October 1 st -7 th	National Day	7 days' vacation



Accommodation in NJU

For the detailed information about accommodation, please refer to the following website:

<http://stuex.nju.edu.cn/en/a/Housing/>



Commonly used telephone numbers in Xianlin campus

Nanjing University Police:	86-25-89685110
Fire Alarm on Campus:	86-25-89685110
Campus Hospital:	86-25-89685120
Management & Service Office for Dorms in Xianlin Campus:	86-25-89680089
Electricity Power Service Center:	86-25-89681118
Network Information Center:	86-25-89683791/89684793
Campus Card Service Center:	86-25-89686529
Telecom Business Hall:	86-25-89681114
Post Office:	86-25-89681112
Library:	86-25-89682324
Gymnasium:	86-25-89680100
Robbery and Theft:	110
Fire:	119
Traffic Accident:	122
Medical Emergency:	120



Buildings of Xianlin dorms

On-Campus Accommodation Information

1. Our office would arrange which building of dorms you will live according to the applicant number and actual situation of on-campus dorms. Students are not allowed to choose the building of dorms by themselves.
2. All the exchange students are recommended to live in Xianlin campus. Due to the limited amount of rooms, it is strongly suggested to live in double rooms. If you apply for a double-room, your roommate (the same gender) will be randomly assigned. Students are not permitted to change rooms on their wills.
3. Electricity in your room will be charged in advance (payment must be made by yourself later on), which would be enough for the first few days' usage. You have to charge the electricity fee using your campus card as soon as possible. (Please go to the pages of "How to top up electricity fee in Xianlin campus".)
4. The bedclothes cannot be provided in dorms on Xianlin Campus. You have to purchase it in advance. NJU will provide a package which includes all the things you may need in your room. The package includes the items listed in the following form. The price for the package is about 500 Yuan RMB. You can buy it when you check-in room. Please be aware that the payment can only be made in cash.
5. The exchange students who have received Confucius Institute Scholarship or Chinese Government Scholarship do not need to pay for the accommodation fee. Exchange students with scholarship will also be arranged to live in Xianlin campus as the others. Please be advised to check our email notification, which will provide the final accommodation arrangement.



List of items for bedding and daily life

No.	Name	Amount
1	Bedding bag 被套	2
2	Blanket 床单	2
3	Cover for pillow 枕套	2
4	Pillow 枕芯	1
5	Quilt 中空保暖被	1
6	Mattress 三合一床垫	1
7	Bedclothes 精梳棉盖胎	1
8	Mosquito net 蚊帐	1
9	Bamboo matting for bed 竹席	1
10	Bamboo matting for pillow 枕席	1
11	Thermos bottle 热水瓶	1
12	Plastics basin 塑料脚盆	1
13	Stainless basin 不锈钢面盆	1
14	Stainless cup 不锈钢口杯	1
15	Luggage bag 行李袋	1



Items for bedding and daily life

Notice:

Please pay the full amount of room fee for the whole stay in Xianlin dorms when you check-in. It could be payed by RMB cash or credit card in Management & Service Office in the ground floor of Xianlin dorm building.

Dorm No. 21 in Xianlin Campus

28

Tel: 025-89681068/025-89681078

Address: International Students Apartment, No.21 Building, Xianlin Campus

Price of the Accommodation:

Double Room: 3000 Yuan RMB/one semester/person; 6000 Yuan RMB/one year/person (not including the fee of electricity and water)

Single Room: 6000 Yuan RMB/one semester/person; 12000 Yuan RMB/one year/person (not including the fee of electricity and water)

Facilities in dorms:

Beds, desk and chair, mini bookshelf, air-conditioner, cable internet service, bathroom furnished with 1 toilet, 1 shower, and 2 sinks

Coin laundry is located at the ground floor. Each time will cost you 3 to 5 Yuan RMB for washing. A dormitory deposit of 600 Yuan RMB for the facilities and 50 Yuan RMB for the room key is required upon check-in. Please appropriately use and care for these facilities and the room key so that it will be able to return 650 Yuan RMB deposit when you check out.

You will need to pay the rent and deposit for one semester when you check in. Please be noted that Visa card, Master card, JCB card currently cannot be used at the front desk. Therefore, it is advisable to bring enough cash with you.



Dorm No. 21 in Xianlin Campus



Xiyuan Dorms in Gulou Campus

Tel: 025-83593589

Address (in English): 20 Jinyin Street, Gulou, Nanjing. Xiyuan Hotel, NJU

Address (in Chinese): 金银街20号(近上海路), 南京大学鼓楼校区状元楼西苑宾馆

Price of the Accommodation:

Double Room: 52 Yuan RMB/person/day (not including the electricity fee)

Single Room: 67 Yuan RMB/person/day (not including the electricity fee)

Facilities in dorms:

Beds, blanket, pillow, dresser, wardrobe, desk and chair, mini bookshelf, phone, air-conditioner, cable internet service, private bathroom



Xiyuan Dorms in Gulou Campus

Notice:

International students living in Xiyuan dorms should pay their room fees according to the stipulated time period. They must pay 650 Yuan RMB materials deposit and 1000 Yuan RMB rent deposit. Please retain the deposit receipt. If it is lost, the deposit will not be returned while checking out. Rent may be paid by month, in which case rent is paid during the 25th and 30th of each month. If students check out, rent is calculated up to the day students return their key.

Please go to the service desk on the ground floor of Xiyuan dorm to purchase electricity. Each time you must purchase at least 100 degrees (KWh) of electricity.

How to top up electricity fee in Xianlin campus?

Please make sure that your campus card has been charged with enough money firstly, then you could start the next steps to do electricity recharge. (Please go to the pages of "About Campus Card" to find the instructions of campus card recharge.)

Use the campus card to top up at the self-service machine. There is a self-service machine on the ground floor of each dormitory building. Be sure to charge enough cash into the campus card in advance. Then you could transfer the money in campus card for electricity recharge on self-service machine.

Click buttons of "校园卡务" (Campus Card Service)-----"电费充值" (Electricity Recharge) on self-service machine.



Self-service machine

The procedure for charging electricity fee:

Step 1: 欢迎使用校园卡自助服务系统 Put your campus card on the machine. 银行卡务, 校园卡务, 卡余额, 卡挂失, 自助领取, 卡信息更新, 新闻资讯, 使用帮助, 报到注册.

Step 2: 欢迎使用校园卡自助服务系统. 帐户查询, 电费充值, 交易明细, 网费充值, 解挂申请, 卡卡转账, 密码修改, 返回, 余额修改.

Step 3: 欢迎使用校园卡自助服务系统. 房间电费查询, 网电记录查询, 房间电费购买, 返回.

Step 4: 欢迎使用校园卡自助服务系统. 鼓楼校区, 仙林校区, 返回.

Step 5: 请选择楼栋. 楼栋, 楼栋. 1楼A区, 1楼B区, 2楼A区, 2楼B区, 3楼A区, 3楼B区, 4楼A区, 4楼B区, 5楼A区, 5楼B区, 6楼, 7楼, 8楼, 9楼, 10楼, 11楼, 12楼, 13楼, 14楼, 15楼, 16楼, 17楼, 18楼, 19楼, 20楼, 21楼, 22楼, 23楼, 24楼, 25楼, 26楼, 27楼, 28楼, 29楼, 30楼, 31楼, 32楼, 33楼, 34楼, 35楼, 36楼, 37楼, 38楼, 39楼, 40楼, 41楼, 42楼, 43楼, 44楼, 45楼, 46楼, 47楼, 48楼, 49楼, 50楼, 51楼, 52楼, 53楼, 54楼, 55楼, 56楼, 57楼, 58楼, 59楼, 60楼, 61楼, 62楼, 63楼, 64楼, 65楼, 66楼, 67楼, 68楼, 69楼, 70楼, 71楼, 72楼, 73楼, 74楼, 75楼, 76楼, 77楼, 78楼, 79楼, 80楼, 81楼, 82楼, 83楼, 84楼, 85楼, 86楼, 87楼, 88楼, 89楼, 90楼, 91楼, 92楼, 93楼, 94楼, 95楼, 96楼, 97楼, 98楼, 99楼, 100楼. Select your dorm-number. 取消.

Step 6: 欢迎使用校园卡自助服务系统. 请输入. 0 1 2 3 4 5 6 7 8 9 Del. [确定] [取消]. Enter your room-number.

Step 7: 欢迎使用校园卡自助服务系统. 请输入. 0 1 2 3 4 5 6 7 8 9 Del. [确定] [取消]. Enter your Password of campus-card.

Step 8: 欢迎使用校园卡自助服务系统. 请输入. 0 1 2 3 4 5 6 7 8 9 Del. [确定] [取消]. Enter the number of electricity fee.

Step 9: 欢迎使用校园卡自助服务系统. 请确认金额. [确定] [取消]. Press this button to confirm.

Step 10: 欢迎使用校园卡自助服务系统. 电费充值成功! 如有疑问, 请咨询: 025-83593589. This page means you have successfully charged. [返回]

Notices for on-campus accommodation

32

- It is forbidden to use high power electronic equipment in dorms (like electric blankets, heaters, microwaves, electric stove, electric kettle, and so on), for your own safety. Smoking is also forbidden in dorms. Please make sure you treat the facilities in dorms with caution. You should be ordered to pay compensation for the breakages on the objects in dorms.
- If you find any damages on the furniture or water and electricity facilities, please notify to the staffs in the Management & Service Office in dorm building and let them to help you to repair the facilities.
- When you leave for a long time or come back after a long holiday, you should do the registration in the Management & Service Office in dorm building. It is forbidden to accommodate any guests in dorms. Any guests who visit your dorms for a short time should do a registration in the Management & Service Office.
- If you discover fires in dorms, please call the safety services office: 86-25-89685110 (Xianlin)/86-25-83595110 (Gulou) or 119 immediately.
- The dorm opening time is from 8:00 to 23:00 every day. Be sure to return to your room before 23:00. Please keep quiet in your room or in the public area. Please keep the volume down when you use stereos. International students wishing to hold a party or large gathering should first request approval from our office.
- Please be sure to live in the exact room that has been assigned to you. Changing rooms without notification is not allowed. Rooms are randomly assigned to individuals. If you do need to change the room due to some reasons, please notify the staff in Management & Service Office and our office.
- Be sure to close your door and turn off all water faucets and lights when you leave your room.
- Please make sure that you have already returned the room key and all other items such as air-conditioner controller, etc. to the Management & Service Office in dorm building before you check-out.

Wish you a pleasant memory in NJU!

Many students will change their addresses and contact details during their time studying at NJU. Please be sure to notify the Study Abroad Student Affairs Office of Institute for International Students, or our office (Section of Student Exchanges of Office of International Cooperation and Exchanges) of new addresses, telephone numbers, or email addresses. And Our office will be able to inform students of important events in a timely manner. Only when we've got accurate contact details can we maintain unhindered communication and provide appropriate assistance.

Notices for off-campus accommodation

- Our office cannot arrange off-campus accommodation for students.
- If exchange students choose to live off campus, they must be sure to register at the local public security bureau within 24 hours after moving in, and must report to the Study Abroad Student Affairs Office within 5 days to fill out a "NJU Study Abroad Student Off-Campus Accommodations Registration Form" and turn in one 2-inch bareheaded photo to complete off-campus residence procedures. (Office Address: Room 518, ZENG Xianzi Building, Gulou).
- When living off campus, it is absolutely necessary to ensure that the source of your housing information is reliable, that rental procedures are entirely legal, and to have your landlord file your rental permit at the local public security bureau, as well as to visit the local public security bureau yourself to apply for a temporary residence registration.
- It's necessary to ensure that all the rental procedures complete, legitimate, and reliable.



34 About Campus Card



How to get campus card?

Campus card is very important during your life and study in NJU. Campus card is widely used in library, students' canteens, supermarkets, hospitals and gymnasium on campus, therefore, remember to bring it along with you all the time.



Campus card for undergraduates



Campus card for graduates

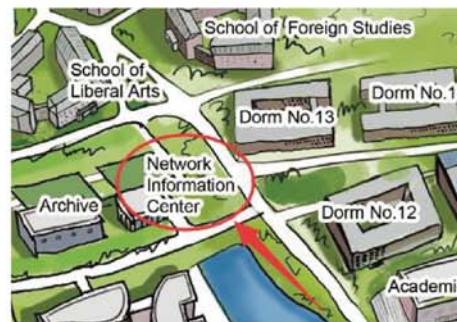
Notice:

1. Original Password of Campus Card: 666666
2. Once getting your card, please go to the self-service machine, or the Network Information Center to change your password.
3. If there are any problems on campus card, please phone to: 86-25-89686529 (Xianlin)/86-25-83596529 (Gulou) to consult the staffs.

You will obtain your campus card at the registration. If you accidentally lose your campus card, you can apply for a new one at Network Information Center. Moneys will be automatically transferred from the old card to the new one. You will have to pay 20 Yuan RMB for a new card.

The location of Network Information Center is shown by the red arrows in the pictures as following.
 Xianlin campus: The hall on Ground floor of Network Information Center;
 Gulou campus: The lobby of Network Information Center in the right side of teaching building in the South part of campus, near the fountain.

Office hours: Monday--Friday, 8:30-11:30, 14:00-17:00



The hall on ground floor of Network Information Center in Xianlin Campus



The lobby of Network Information Center in the right side of teaching building in the south part of Gulou campus, near the fountain

How to top up campus card?

You could charge any amount of RMB by cash into the campus card to use it for your daily life. It is recommended that you charge more than 100 Yuan RMB for the first time. Please go to on-campus supermarket named Jiao-Yu supermarket in Xianlin or Gulou Campus to top up campus card. The staffs in the counter could help you to charge money into campus card.

Notice:

- Jiao-Yu supermarket in Xianlin campus offers cash top-up service from 8:00 to 14:00, Monday to Friday.
- Jiao-Yu supermarket in Gulou campus offers cash top-up service from 8:00 to 14:00, Monday to Friday.



Jiao-Yu supermarket in Xianlin campus



Jiao-Yu supermarket in Gulou campus

36 About On-Campus Internet



How to top up network fee?

Please make sure that your campus card has been charged with enough money firstly, then you could start network recharge.

Use the campus card to top up at the self-service machine. There is a self-service machine on the ground floor of each dormitory building. Be sure to charge enough cash into the campus card in advance. Then you could transfer the money in campus card for network recharge. Click buttons of "校园卡务"(Campus Card Service)-----"网费充值"(Network Recharge) on self-service machine. Then your log-in ID for on-campus internet could be activated to use. It is recommended that you charge 30 Yuan RMB for the first time. Standard Rate: 30 Yuan RMB/month Network Information Center: 86-25-89683791/89684793 (If you have any questions, please call this number.)

How to get access to the on-campus Internet?

Please make sure that your network recharge has done firstly, then you could start the next steps to get access to the on-campus Internet.

Step 1: Enter the following website: <http://p.nju.edu.cn>



Step 2: Enter your Username (Log-in ID) and Password
Username (Log-in ID): Your student number
Initial Password: nju + the last 6 digits of your passport number (e.g. if your passport number is ZL8464542, the password is nju464542)

Notice: This log-in ID for on-campus internet cannot be used in Xiyuan Dorms or outside NJU campus.

The procedure for charging network fee:

Step 1: 使用校园卡自助服务系统
Put your campus card on the machine.
Press this button.

Step 2: Press this button.

If you have not yet changed your password, enter original password: 666666;
If you have changed your password, enter your new password.

Enter your student number

Step 3: 请放入卡

Step 4: Enter the amount of money you would like to charge for on-campus internet

Step 5: 请输入金额

Step 6: Press this button to confirm

Step 7: 网费充值转账成功!

This page means you have successfully charged.

38 Traffic in NJU



On-Campus Shuttle Bus

In Xianlin campus, you could take On-Campus Shuttle Bus. Please use your campus card to pay for the fee of on-campus shuttle bus. It only costs 0.5 Yuan RMB for one time.

There are quite a lot of on-campus shuttle bus stops in Xianlin campus, as shown by the picture, where you can get on and off the on-campus shuttle bus.



On-Campus Shuttle Bus



On-Campus Shuttle Bus Stop



Bicycles

As you will notice very soon, almost everyone in NJU owns a bike. Since this is the cheapest, most convenient and an environmentally friendly way of transportation, it is certainly a good idea to buy one. An inexpensive new bike costs at least 400 Yuan RMB. Cheap offers for used bikes range from 200 to 300 Yuan RMB and are advertised on several university notice boards. Moreover, shared-bikes are also commonly used on campus.





The timetable of "On-Campus Shuttle Bus Schedule (XIAN-LIN Campus)" is as following:
 *For your information, the nearest bus-stop from International Students' Dorm is in front of Dorm No.19.

For Saturday, Sunday, Holidays

▷ Start from SOUTH GATE West

8:00	8:30	9:00	9:30	10:00	10:30	11:00	11:30	12:00	13:00
13:30	14:00	14:30	15:00	15:30	16:00	16:30	17:00	17:30	16:00
18:30	19:00	19:30	20:00	20:30					

▷ Start from SOUTH GATE East

8:20	8:50	9:20	9:50	10:20	10:50	11:20	11:50	12:20	13:20
13:50	14:20	14:50	15:20	15:50	16:20				

For Winter Vacation

8:30	9:20	10:10	11:00
11:50	12:30	13:30	14:30
15:30	16:00	17:30	

For Summer Vacation

8:00	9:00	9:40	10:20
11:00	11:40	13:00	14:00
15:00	16:00	16:40	17:40
18:40			

For May, June, July, August, September, October

▷ Start from SOUTH GATE West

7:20	7:40	8:00	8:20	8:40	9:00	9:20	9:40	10:00	10:20
10:40	11:00	11:20	11:40	12:00	12:20	12:40	13:00	13:20	13:40
14:00	14:20	14:40	15:00	15:20	15:40	16:00	16:20	16:40	17:00
17:20	17:40	18:00	18:20	18:40	19:00	19:20	19:40	20:00	20:30
21:00	21:20								

▷ Start from SOUTH GATE East

7:40	8:00	8:20	8:40	9:00	9:20	9:40	10:00	10:20	10:40
11:00	11:20	11:40	12:00	12:20	12:40	13:00	13:20	13:40	14:00
14:20	14:40	15:00	15:20	15:40	16:00	16:20	16:40	17:00	17:20

For January, February, March, April, November, December

▷ Start from SOUTH GATE West

7:20	7:40	8:00	8:20	8:40	9:00	9:20	9:40	10:00	10:20
10:40	11:00	11:20	11:40	12:00	12:20	12:40	13:00	13:20	13:40
14:00	14:20	14:40	15:00	15:20	15:40	16:00	16:20	16:40	17:00
17:20	17:40	18:00	18:20	18:40	19:00	19:20	20:00		

▷ Start from SOUTH GATE East

7:40	8:00	8:20	8:40	9:00	9:20	9:40	10:00	10:20	10:40
11:00	11:20	11:40	12:00	12:20	12:40	13:00	13:20	13:40	14:00
14:20	14:40	15:00	15:20	15:40	16:00	16:20	16:40	17:00	17:20





In Xianlin Campus

NJU has 11 canteens in Xianlin campus. You could find any canteen you like to have meals. Please use your campus card to pay for the fee of meals.



There are several restaurants in Xianlin Campus. Please check with the following pictures and the instructions below each picture.

The location of different restaurants in Xianlin Campus:



→ 猫小姐的甜品店



Miss Cat's Dessert Shop located in the ground floor of natatorium

→ 汉风堂餐厅



The restaurant of Behind the Screen located on the ground floor of Student Activities Center

→ 第三领域咖啡厅



The 3rd Space Cafe located in the ground floor of Department of Computer Science and Technology

→ 摩尔花园餐厅



Mole Garden located in the 2nd floor of School of Chemistry and Chemical Engineering

In Gulou Campus

NJU has 4 canteens in Gulou Campus. You could find any canteen you like to have meals. Please use your campus card to pay for the fee of meals.



There are several restaurants in Gulou Campus. Please check with the following pictures and the instructions below every picture.

The location of different restaurants in Gulou Campus:





→ 汉风堂餐厅

Han Feng-tang Restaurant on the ground floor lobby of Zeng Xianzi Building offers food and beverage, and free Wi-Fi. It's a good place to study, meet language partners, and celebrate birthdays.



Han Feng-tang Restaurant



→ 梧桐深处餐厅

Wu Tong Shen Chu Restaurant on the ground floor of Anzhong Building offers food and beverage.



Wu Tong Shen Chu Restaurant

→ 西苑宾馆

The Xiyuan Hotel has a cafeteria on the ground floor for the faculty and international students. The cafeteria provides breakfasts (7:00-9:00) and lunches (11:00-12:30) from Monday to Friday. The Xiyuan Hotel also has a restaurant on the 2nd floor, offering Chinese style food. You could have lunch there.

How to get restaurant card of Xiyuan hotel?

You could go to the counter on the 2nd floor of Xiyuan hotel. After paying the fee of the Card for 10 Yuan RMB, you could get a Restaurant Card only for Xiyuan hotel. You could deposit some money into this card for meals.



Xiyuan Hotel

48 Shopping in NJU



Supermarkets in Xianlin Campus

Jiao-Yu Supermarket is located in the ground floor of Dorm No.2 in Xianlin Campus. You could charge your money into campus card here.



Jiao-Yu supermarket in Xianlin campus

Another supermarket in Xianlin Campus is named as "Zhao Hua Xi Shi" supermarket, which is located in the ground floor of Dorm No. 3 in Xianlin campus.



"Zhao Hua Xi Shi" supermarket (朝花夕食超市)

Supermarkets in Gulou Campus

Jiao-Yu supermarket in Gulou campus

Jiao-Yu Supermarket is located in the South part of Gulou Campus. You could also charge your money into campus card here.



Gift Shop of NJU

All certificated souvenirs of NJU could be found at Jiao-Yu supermarkets in Xianlin campus or the gift shop named "Memory of NJU" (南大記憶) located near Hankou Road Gate in Gulou campus.



50 Medical Service



Nanjing University has a school hospital, divided into Gulou campus and Xianlin campus branches, providing medical treatment services for everyone. When you are not feeling well, you can go to one of these hospitals for advice and treatment.

The hospital in Xianlin Campus is located in the north part of Dorm No. 5. The hospital in Gulou Campus is located in the eastern part of Hankou Road. (Please check it with campus map.) You could take your campus card to pay for all the fee in both hospitals. Phone number of hospital in Xianlin Campus: 86-25-89685120 and in Gulou Campus: 86-25-83592347-8002.

Nearby Gulou campus of Nanjing University, there is Gulou Hospital. It is very good large-scale hospital and could offer excellent medical service. You may choose to go to Gulou hospital according to your needs.

The address of Gulou Hospital: No.321 Zhongshan Road, Gulou District, Nanjing City, Jiangsu Province, China. Tel: 86-25-83304616.



School Hospital in Xianlin



Gulou Hospital



Xianlin Hospital of Nanjing Gulou Hospital

There is Xianlin Hospital of Nanjing Gulou Hospital located in No. 188 Ling Shan North Road (灵山北路188号), Qixia District, Tel: 86-25-85358120.



About Express Delivery

In case you need to send or receive the mails, the mailing address of both campuses is as following:
Xianlin Campus, Nanjing University, No.163 Xianlin Avenue, Qixia District, Nanjing, Jiangsu Province, China, Postcode: 210023 (江苏省南京市栖霞区仙林大道163号, 南京大学仙林校区, 邮编:210023).
Gulou Campus, Nanjing University, Hankou Road 22, Gulou District, Nanjing, Jiangsu Province, China, Postcode: 210093 (江苏省南京市鼓楼区汉口路22号, 南京大学鼓楼校区, 邮编: 210093).

All the mails and packages sent to you will be kept in the Delivery Service Spot, instead of deliver to your dorms directly. Please go there to pick it up.

The position of Delivery Service Spot in Gulou campus is located in the south part of campus, shown by red circle in following picture:



The position of Delivery Service Spot in Xianlin campus is located between Dorm No. 3 and Dorm No. 5, shown by red circle in following picture:



Both express delivery centers provide drop-out and pick-up services. The logos of the participating express companies can be found on the front wall of the centers, as shown by the picture.

52 Sports Facilities



In Xianlin Campus

Xianlin Campus has already opened its stadium, basketball, volleyball, and tennis courts, as well as other sports facilities to students. The gym houses a ping-pong room, badminton room, weight room, as well as other facilities open to the community, some of which require fees for use.



Natorium is located between department of philosophy & religious studies and Dorm No. 8. If you would like to swim there, it costs 10 Yuan RMB every time. You could use your campus card to pay for the fee.

Before swimming in our natatorium, you should go to our campus hospital to do the physical examination. And then take the completed physical examination form to the ground floor of natatorium to have the registration of swimming permit.



Natorium

Swimming Pool

Fang Zhaozhou Gymnasium is also called as "Fire Cube" by NJU students. It has the basketball, volleyball, badminton, ping-pong and tennis courts, and classrooms for gymnastics training, and Wu-Shu (武术).



Gym inside the Fang Zhaozhou Gymnasium
Open time for Gym, badminton, and ping-pong courts: From Monday to Friday 17:30---21:00, Saturday and Sunday 8:00---21:00



The outside scene of Fang Zhaozhou gymnasium



The inside scene of Fang Zhaozhou gymnasium

In Gulou Campus

Gulou Campus has already opened its stadium, basketball, volleyball, and tennis courts, as well as other sports facilities to students. Some facilities require fees for use.



Stadium in Gulou campus



Volleyball court near stadium

Lv Zhihe Natatorium is beside the gymnasium. There has an indoor swimming pool, exercise rooms, ping-pong rooms, and gymnastics rooms.

Before swimming in our natatorium, you should go to our campus hospital to do the physical examination. And then take the completed physical examination form to the lobby of natatorium to have the registration of swimming permit.

Fee for swimming: 10 Yuan RMB for each time; 500 Yuan RMB for half a year; 800 Yuan RMB for one year.



Lv Zhihe Natatorium



54 About Courses

Courses for Exchange Students

Please note that most courses are now taught in Xianlin Campus.

● Chinese Language Courses

Nanjing University offers all students an opportunity to attend Chinese language courses. Courses of all levels (Elementary Level, Intermediate Level, and Advanced Level) are offered. Chinese Language Courses aim to improve students' Chinese language ability and help them to overcome language barriers. Students are required to take a Chinese proficiency test before starting Chinese language classes. And then students will be divided into different classes according to their Chinese proficiency and their test scores. **Students with no knowledge of Chinese language do not need to take the test. Simply please register directly for Elementary Level courses.** Students would be provided with a card of Chinese language class by Institute for International Students. Please carry the card when you go to have Chinese language courses.

If you have any questions about the Chinese language courses, please go to Room 520, Zeng Xianzi Building (Gulou) for help. Tel: 86-25-83594613.

● English-taught Courses

English-taught Courses are offered by different departments/faculties of Nanjing University. It is also open to exchange students. The course list differs from each semester due to NJU academic plan, please refer to our website for newest updated information.

● Chinese-taught Courses

Chinese-taught courses are also open to exchange students when they got permission from professors. It is strongly recommended that the students with a very high level of Chinese language proficiency could attend this kind of courses.

If you have any questions about the English-taught courses and Chinese-taught courses, please come to Room 803 or Room 805, North Administration Building (Xianlin) for help.

Notices on when to select courses:

- At the beginning of every semester, we could get the new list of courses after new exchange students' registration and enrollment. The new syllabus of Chinese Language Courses and English-taught Courses would be loaded on the following websites, please take a notice of it regularly. We would also inform you to check the new syllabus and schedule of courses by email.

http://stuex.nju.edu.cn/en/a/News__Announcements/



http://stuex.nju.edu.cn/en/a/English_Taught_Courses/



- After new exchange students' registration and enrollment, our office will send email to inform you to select courses. Please wait for our email announcements.

How to select courses?

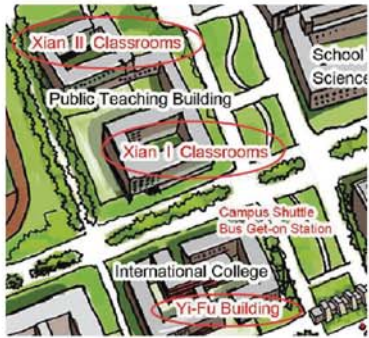
For the details about the method of selecting courses, please refer to the following website to check the instructions carefully.

http://stuex.nju.edu.cn/en/a/Registration__Course_Selection/



Where to have courses in Xianlin campus?

In Xianlin campus, Xian I classrooms and Xian II classrooms are located in the public teaching building, and Yi-Fu Building is located in international college, as shown by the red circles in following picture.



Classrooms in Xianlin campus



Building of international college in Xianlin campus

Where to have courses in Gulou campus?

Classrooms in Gulou campus

Teaching building in Gulou campus is near to Hankou Road Gate. Institute for International Students also has the classrooms in ZENG Xianzi Building. Some of the other departments also have their own classrooms. Please take a notice of the syllabus to find the right classrooms for you.



Teaching building in Gulou campus



ZENG Xianzi Building

Grading System



Students' academic performance is assessed based on four different criteria: exams, assignments, attendance, and class participation. Each professor, however, may prefer a different performance policy, students should follow the professor's guidelines in such cases. Generally, course performance is graded on the following 100-point scale:

NJU Grading Scale

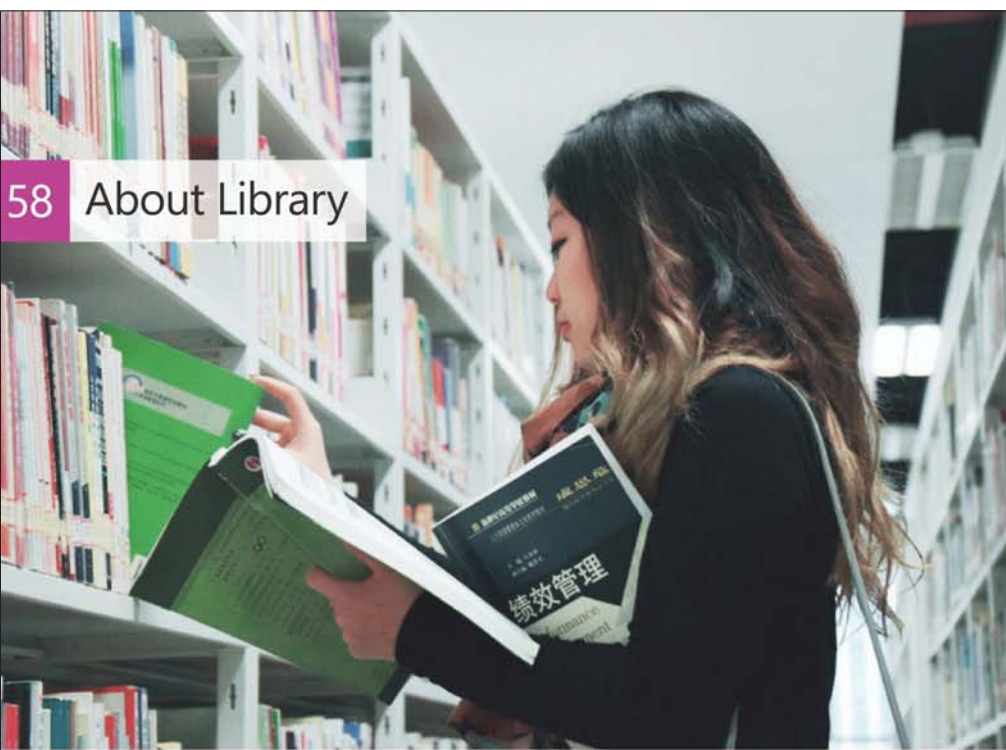
Notice:

Attendance is compulsory in all courses. In case of illness or any other compelling reason for absence, you should notify your instructors, letting them know the reason for your absence if possible in advance. Missing classes more than three times could mean losing some or all of the credits.

Scores	90-100	80-89	70-79	60-69	0-59
Grades	A (Excellent)	B (Good)	C (Average)	D (Pass)	F (Fail)
	Pass				Fail

Credit and Transcript

- Exchange students can get formal NJU credits as long as they finish the required class attendance and pass exams. One credit equals to 16 hours of study.
 - Exchange students are expected to take at least 3 courses every semester.
 - Credits can be obtained when students' test scores are above 60.
- Our office would mail the transcript to the coordinator of your home university.



58 About Library

Library of Nanjing University is one of the best university libraries in China.

Library of Xianlin Campus

Du-Xia library is one of the most beautiful university libraries in China. It has 5 floors and 45 reading room. You could use your campus card to get into the library and read books.

Open Time: 8:00 — 22:00



The outside scene in Du-Xia library



The inside scene in Du-Xia library

Library of Gulou Campus

Gulou library offers students an excellent reading atmosphere, and rich materials for studying and researching. Gulou library has 4 floors. It offers many reading rooms. You could use your campus card to get into the library and read books.

Open Time: 8:00 — 22:00



The outside scene in Gulou library



The inside scene in Gulou library

All the libraries in both campuses also offer individual and group study spaces; many of them provide technical equipment and guarantee a silent atmosphere in which to work.

60 International Student Support



Buddy Program is a cross-cultural communication project under the framework of Association of International Communication (AIC) and Students International Exchanges & Cooperation Association (SIECA), which pairs new international students with current students of NJU, and aims to help international students settle into NJU.

Buddy Program will bridge and facilitate exchanges between the international and Chinese students and thereby providing a platform for cross-border opportunities and joint cooperation.

You would be invited to join Buddy Program at NJU, in which individual NJU students would pair with you to help you get involved in the new environment. They may help you get familiar with NJU upon your arrival, and may invite you to activities where you could get more communication with domestic students.

Members from AIC and SIECA would contact you at the beginning of the semester, or even before your arrival via email. If you have any questions about the study and life in NJU before or after your coming to China, you could contact your buddy by email. Your buddy will be happy to give your support and help. Wish you a nice friendship with your buddy.

The Buddy Program will always set up a **WeChat chatting group**, where all the important notices will be released by the buddy. Therefore, it is highly recommended that each exchange student could create your own **WeChat account** after your coming to China and join the **Buddy WeChat Group**. The **Buddy WeChat Group Number** will be announced in the orientation meeting.



For more information about Buddy program, please visit the following website:
http://stux.nju.edu.cn/en/a/Buddy_Programme/



MOON CAKE 中秋

Topic: Activity of moon cake DIY in the Mid-Autumn Festival

Time: 7:00pm-9:00pm, 13th September, 2016

Location: 9th canteen in the Xianlin campus of Nanjing University

Members: the entire members of AIC, international students, and exchange students

contact information: send messages to Mr Yang (13276622887)

Mid-Autumn Festival



JOIN US!

Do you plan to meet your buddy for a coffee or tea? Or would you like to discuss different cultures, talk about university life and get to know new people? Or do you want to meet interesting people from all over the world who speak English, French, German, Korean, Japanese, Spanish and other languages? Join our buddy program and Buddy WeChat Group! 😊



Members from AIC and SIECA

62 Cultural Life in NJU



Student Activities Center

Cultural Center and Heritage

In Xianlin campus, there is one student activities center composed of two modern buildings. Student activities center has theatres, lecture halls, multi-purpose halls, piano rooms, and violin rooms. Usually concerts, operas, and dramas will be held here.

In Gulou campus, you could find several memorial houses of famous figures, such as Pearl S. Buck, also known by her Chinese name SAI Zhenzhu (赛珍珠), who was an American writer & novelist and was the first American woman to win the Nobel Prize for Literature; And John H. D. Rabe, who is best known for his efforts to stop the atrocities of the Japanese army during the Nanking Occupation Massacre and his work to protect and help the Chinese civilians during the event.



Pearl S. Buck Memorial House



John H. D. Rabe Memorial House



Cultural Activities

Our Office and Institute for International Students usually organize a great variety of different Chinese traditional cultural activities, such as Chinese paper-cuts, Chinese calligraphy, Moon cake DIY, etc. If you would like to try out these interesting activities, please don't hesitate to contact us by email or contact AIC and SIECA by Buddy WeChat Group.



Excursions

Our office with AIC & SIECA or Institute for International Students also organize excursions to Chinese cities of political, cultural and historical interests, as well as to other general tourist attractions in Nanjing city.



About Extending Study



According to the inter-university exchange agreement, an exchange student's course of study will usually be either one semester or one academic year. If the exchange student wishes to extend their course of study, the deadline for that application is **before May 30th and November 30th of every year.**

The procedure of applying for an extension to your course of study:

1. The exchange student first applies to their home university's international office.
2. The home university's international office confirms with NJU's international office.
3. The student obtains official approval from both universities.
4. International exchange students extend their courses of study at the Academic Affairs Office of Institute for International Students.
5. International exchange students go to the Study Abroad Student Affairs Office of Institute for International Students to extend their visas, residence permits, etc. (For the details about extending visas and residence permits, please go to the pages of "Visas and Residence Permits").

64 Before Leaving NJU



Checklist: Leaving NJU

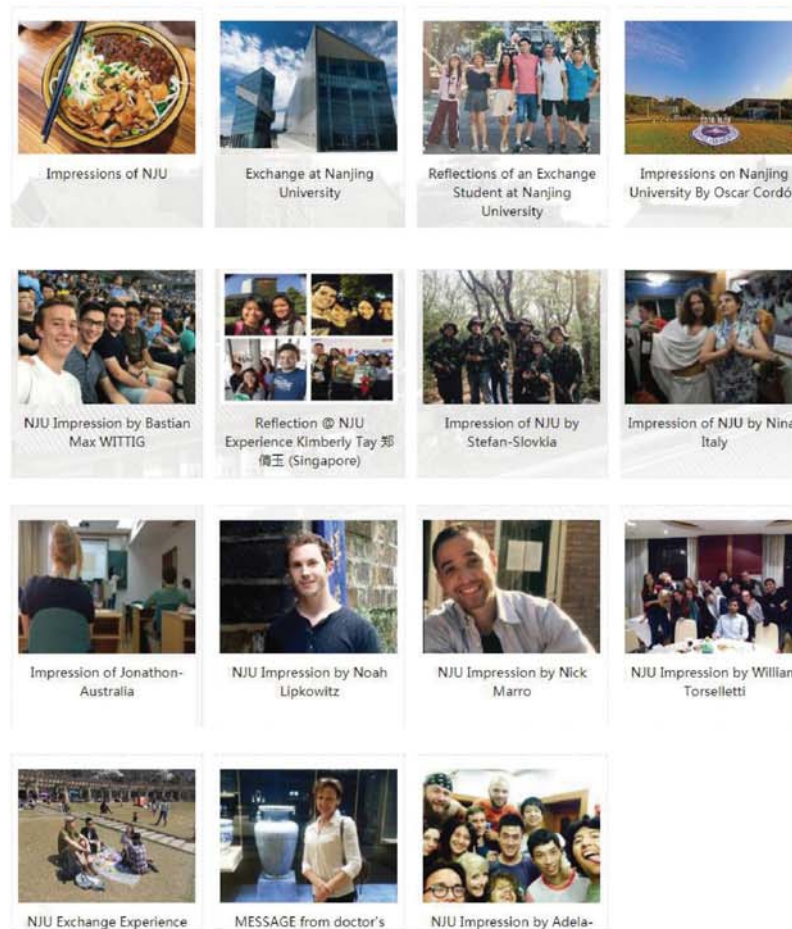
- Visit your faculty or your programme coordinator and make sure that you have fulfilled all the obligations related to your stay, that all the paper work is done, and that you have received all relevant information.
- Make sure all library books have been returned.
- Cancel all the contracts (accommodation, mobile phone, etc.).
- In the case of on-campus accommodation, return your room key and the other necessary items to the Management & Service Office of your dorm.
- Make sure that your dormitory deposit has been returned to you when you check out. (If there are losses or damage to the items or facilities in dorm, Management & Service Office will remove an appropriate amount from your deposit before returning it.)
- In the case of off-campus accommodation, make sure you contact your landlord to terminate your housing contract well in advance. If applicable, arrange for your deposit to be refunded.
- Close your bank account in China.
- Submit an essay about "Impression of NJU" to the email address of our office: stuex@nju.edu.cn
- Organize a big farewell party 😊

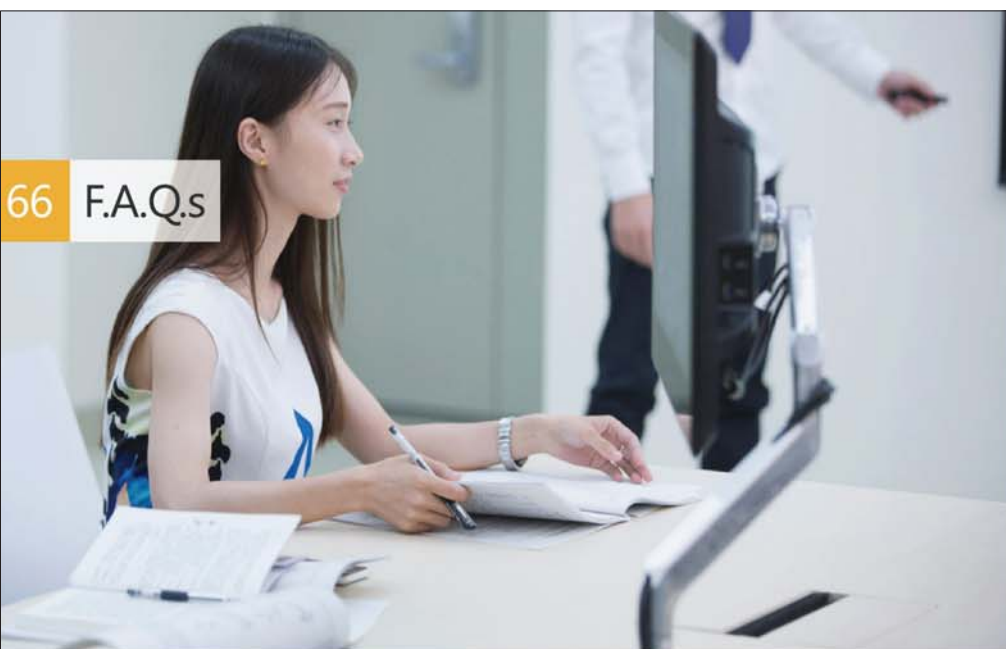
Before your leaving NJU, please submit an essay about "Impression of NJU" to us. And in your essay, please write down your life and feelings in NJU to share with others and offer useful experiences to future foreign students. It is always required to have 2 or 3 colored photos in the essay. The preferred length is more than one A4 page, with 8 point size "Times New Roman" font.

Your essay would be published on our website of "Impression of NJU":
http://stuex.nju.edu.cn/en/a/Impression_of_NJU/
 Please email your essay to: stuex@nju.edu.cn



The web page of "Impression of NJU"





Please note that due to the considerably large volume of enquiries which we are dealing with when you email to us for questions, we kindly ask for your patience and understanding until such time as we are able to respond to your email.

It is strongly suggested that you could click the following website of "Answers Online" at first: <http://stuex.nju.edu.cn/en/plus/list.php?tid=272>



Please enter a key word in the searching blank to find the similar FAQs. Hope you could get a satisfactory answer from "Answers Online".

FAQs Please Enter Key Word of Your Question :

Key Word in Question Enter a word...

Key Word in Question
Key Word in Answer

Application Enrollment Visa Issues Accommodation Academic Affairs English Courses Campus Life Financial Issues Finishing Study Others

Q: How do students pay for on-campus dorms? Only cash or can pay by credit card? Can students pay for room fee separately for each month?

A: If you live in Xianlin dorms, you should pay for the full amount of room fee for the whole stay when you check in. If you live in Xiyuan dorms in Gulou campus, you can pay for the dorm separately for each month and it would be better to pay in RMB cash.

Q: How to apply for on-campus dorms?

A: You have to apply on-campus accommodation due to the limited spots of student dormitories. Please download the Accommodation Application Form from the following website:
http://stuex.nju.edu.cn/en/a/Download_Center/20160918/807.html

Please be well noted that:

1. Please email the filled Accommodation Application Form before October 30th (For spring semester) or April 30th (For fall Semester) to your coordinator with the other application materials.
2. Reservation cannot be cancelled once you submit the application.
3. Applications overdue won't be considered.
4. NJU will assign students' accommodation according to applications, students are not permitted to change rooms on their wills.

The web page of
"Answers Online"

Voice of Exchange Students



By William Torselletti
from Italy

NJU was well-organized. The university staffs were helpful and everyone always tried to solve my problems and to answer my questions. The teachers were good, and every day they tried their best to teach us Chinese. Not only did I meet foreign students, but I also met some Chinese students. They also were very friendly and I like saying that they were the most helpful people I have ever met. This is NJU, a place where you always have a good time with good people. I will never forget this experience, I will never forget NJU.



By Kimberly Tay from
Singapore

I was welcomed by the friendly mentors and professors I met in NJU. They were always more than willing to help me when I faced any difficulties. All the local and international friends I made during this trip is something I never expected! Sharing with one another our local cultures was something I always enjoyed talking to them about. The great experience I had for this NJU exchange is indescribable with words. All these memories and fun I had would be something that I would never forget. I am glad that I had taken away valuable lessons from Nanjing and given the opportunity, I would love to come to this fantastic place again!



By Noah Lipkowitz
from the U.S.A

I will always look back fondly on my time at NJU, one of China's oldest and most prestigious institutions. It was a privilege to spend time on the university's beautiful, historic campus, and an honor to be surrounded by intelligent and curious classmates. Both the places and people of NJU soon became my "home away from home" and I carry them with me in my personal and professional endeavors to this day. I would recommend NJU to those hoping to have an authentic and memorable educational experience in China.



By Adela from Czech
Republic

Buddy is a young student of NJU that speaks English and with your buddy you can not only receive help and support, but also practice your Chinese. They can show you around, take you to meet new people and explain some cultural differences when things become unclear. I quickly became friends with buddies and we altogether often went for a dinner. These memories are very precious and I will remember them for rest of my life. Having such nice and open minded optimistic friends, which are very happy to help you, is priceless and I am very glad that I could, thanks to NJU Buddy program, have such a warmhearted experience.